



# Aid Nexis Client Manager Connection Manual

Updated Aug. 2018

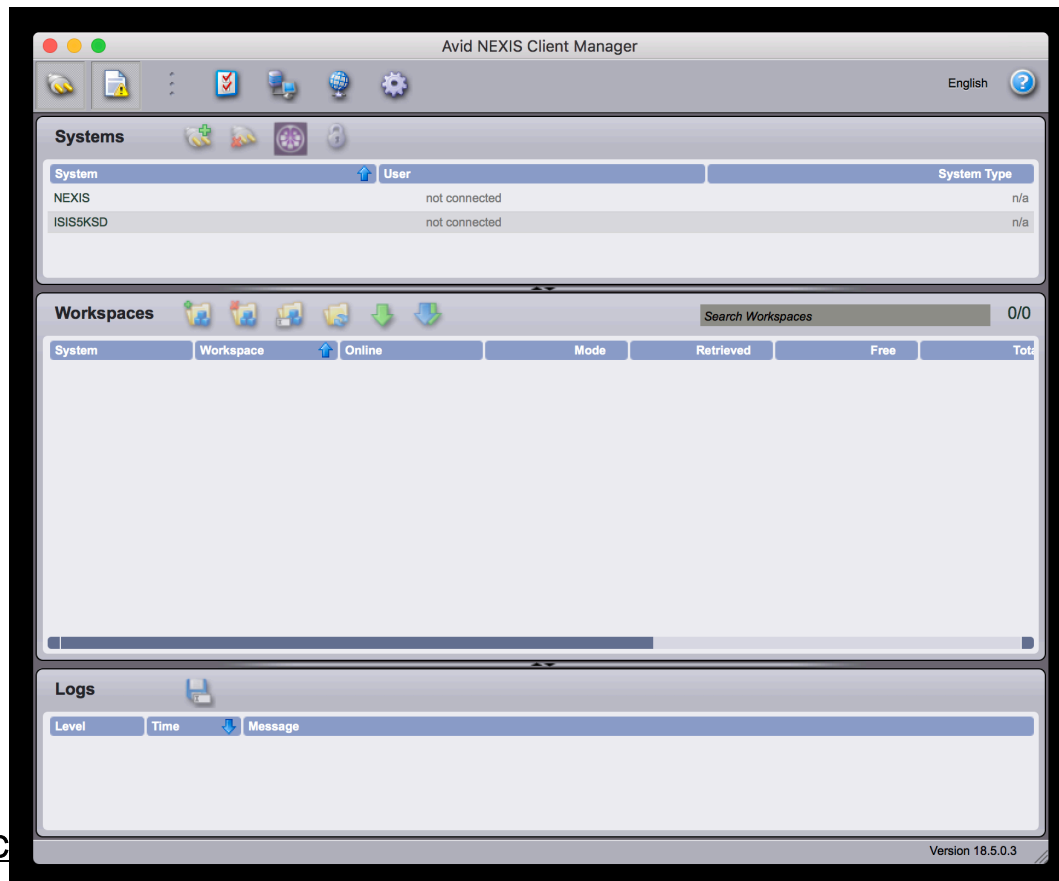
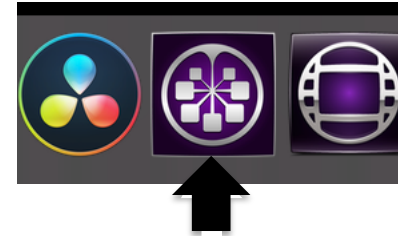
## Avid Nexis Client Manager

In order to access class media and your personal workspace on the server, you will need to log into the NEXIS Client Manager.

You will find the icon for the application in the dock at the bottom of the screen.

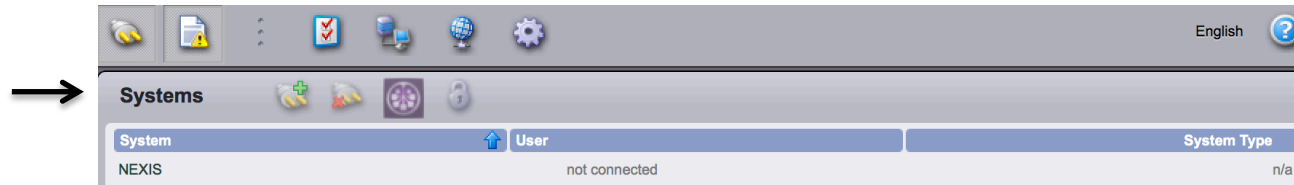
Click on the icon and the application will open.

You will be concentrating on **SYSTEMS & WORKSPACES**.



C

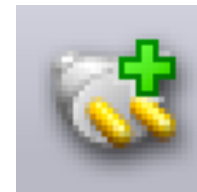
To log into the server, you will have to go to the section **SYSTEMS**.



Under the System column you will see the label **NEXIS**. You need to select this. It will highlight green when it is selected. What will also happen is the **CONNECT TO SELECTED SYSTEM(S)** icon will also become active.

To connect to the Nexis system, you can do one of two things:

1. Click on the “Connect to Selected System(s)” icon
2. Double click on the Nexis name.



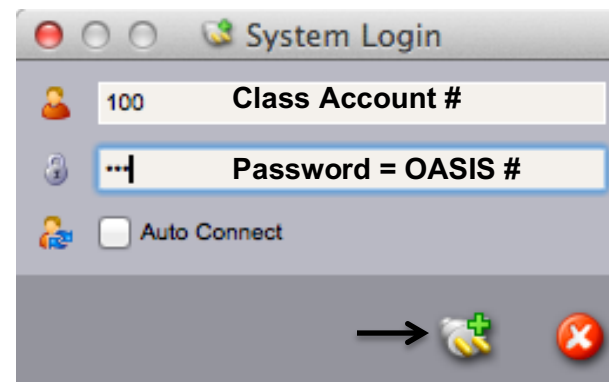
**Connect to Selected System(s)**

### **SYSTEM LOGIN**

A window will appear where you will log into the server using your assigned class account number.

Your password is your Oasis ID #.

Click on the plug, i.e. “Connect to Selected System(s)” icon to connect.

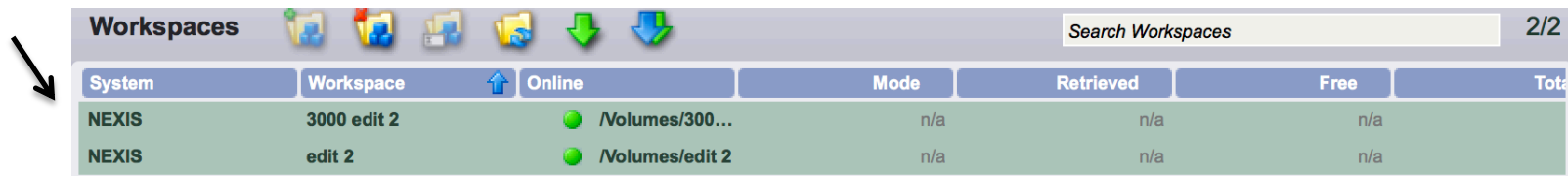


## SELECTING WORKSPACES

What will appear within the Workspaces area is the workspace(s) on the server that have been assigned to you.

To mount a workspace, you can do one of two things:

3. Double click on the workspace name.
4. Select the workspace(s) and click on the Mount Icon



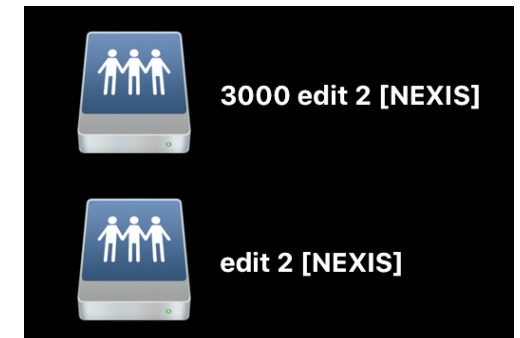
System	Workspace	Online	Mode	Retrieved	Free	Total
NEXIS	3000 edit 2	● /Volumes/300...	n/a	n/a	n/a	
NEXIS	edit 2	● /Volumes/edit 2	n/a	n/a	n/a	

In the example above, I'm accessing my personal workspace and the Edit 2 media workspace.

The workspaces will now appear on the desktop.



FYI - The workspace assigned to you is Read/Write. The media workspace is Read only. Therefore, you are only writing to the numbered workspace.

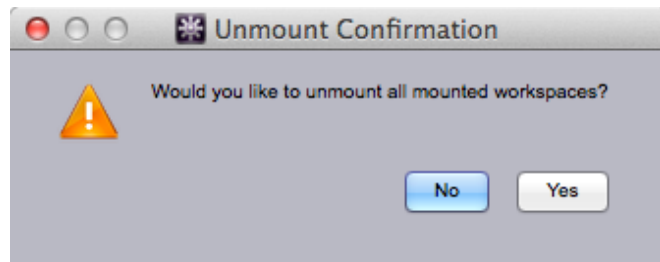


### **QUITTING CLIENT MANAGER**

Once you have mounted your workspace, you can Quit the Client Manager but there is one thing to be mindful of before quitting.

When you quit the program, a window will open prompting you to unmount the workspaces. Do NOT unmount at this time.

**CLICK ON NO.**



### **UNMOUNTING WORKSPACES FROM DESKTOP**

When you have finished working, you will need to unmount the workspaces from the desktop.

Make sure to do this, otherwise the next person who comes to edit will have access to your workspace.

You can eject the workspace(s) one of two ways:

1. Select workspace(s), click on COMMAND + E to eject.
2. Select workspace(s), drag them to the Trash in the dock to eject.